









# KAMO DUAL LUXURY EMULSION

LUXURY EMULSION FOR  
BOTH EXTERIOR  
& INTERIOR WALLS WITH  
RICH FRAGRANCE

## PROPERTIES

-  Feel the Freshness
-  High Sheen
-  Smooth Finish
-  Stain Resistant
-  High Opacity
-  High SRI Value
-  Anti Dirt Pickup
-  Anti Fading



## PRODUCT INFORMATION

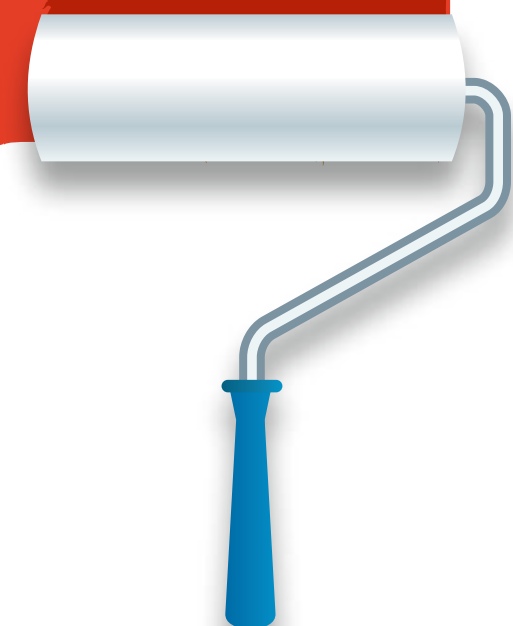
Kamo Dual Luxury Emulsion is an Elastomeric, Super Protective 100% Acrylic Latex Paint which provides Freshness in the room with its Rich Fragrance.

It is Specially formulated for exterior & interior walls.



## USP OF PRODUCT

It is Water Resistant and protects the Exterior& Interior walls from Dampness, Algae and Fungal caused by lashing rain. It is also Stain Resistant paint and also has the quality of High Opacity. The elasticity of the paint film helps to bridge hairline micro cracks and also enhance the look of the walls.





Washability	Colors Available	Coverage	
Best in class	2500+	<b>1 Coat</b>	20-24 sq. mt/lit. **
		<b>2 Coat</b>	10-12 sq. mt/lit. **



**Lead Free Guarantee & Low VOC**



**Finish- High Sheen & Smooth**







## AVAILABLE PACKS

1 LTR



4 LTR



10 LTR



20 LTR





## THINNING

Apply one coat of Kamo Dual primer by thinning 1 Ltr of primer with 500-600ml of water. Allow the primer coat to dry for 4 hours. Apply 2-3 coats by diluting 1 Liter of **KAMO DUAL LUXURY EMULSION** Max. 400ml of water. A gap of 4-6 hours should be given between the coats.



## PRECAUTIONS

Do not over thin.  
Stir well and strain before use.  
Always ensure paint those areas which are vertical to rain fall e.g., Top surfaces of sun shades.



## TECHNICAL DATA

Finish	Smooth
Drying Time	4-6 hours
Flash point	NA
Stability of Thinned Paint	To be used within 24 hours.
Shelf Life	3 years from the date of manufacturing in original tight containers kept away from direct sunlight and extreme heat.







## SOME SUPERHEROES WEAR CAPES INSIDE & AROUND THE HOUSE



**PROTECTS THE EXTERIOR &  
INTERIOR WALLS FROM DAMPNESS,  
ALGAE & FUNGAL**



**ELASTICITY HELPS TO BRIDGE  
HAIRLINE MICRO CRACKS .**







**TAN TANA TAN TAN TAN TARA  
'EK HI PAINT HAI  
ANDAR AUR BAHAR KA!'**

**#PaintKa  
DoubleRole**

